

Magspec 35 mm

large bore permanent magnet

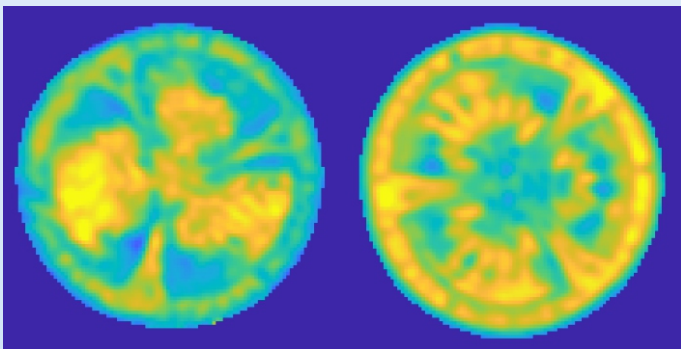


Available upgrades:

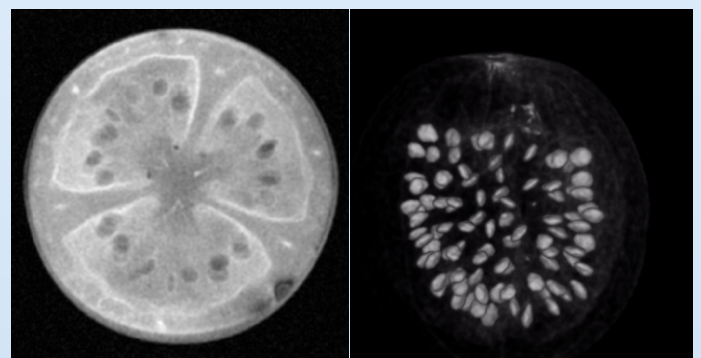
- variable sample temperature upgrade
- exchangeable probe system
- multi-resonant coil
- simultaneous excitation and acquisition at multiple frequencies
- actively damped RF coil

Top features:

- high performance 3D imaging
- built-in high power gradients
- magnet temperature control
- optimized RF coil
- 0.5 Tesla
- high homogeneity
- robust magnet construction



Tomato - T1 and T2 map



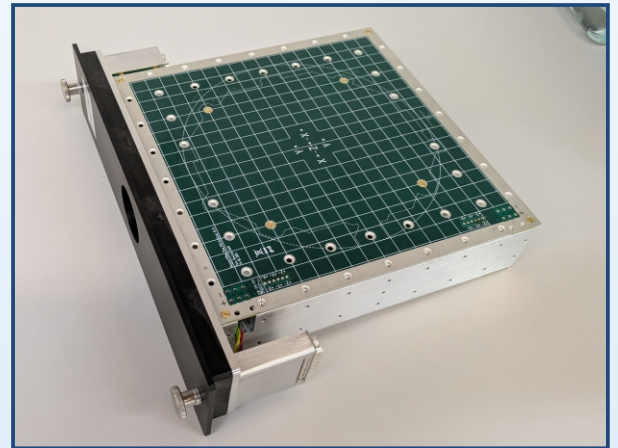
Tomato - 2D and 3D Gradient Echo

Magspec 35 mm

large bore permanent magnet



Full setup including drive-L, DC-600, RF-200 and magnet.



Exchangeable probe system 35 mm magnet

Specifications

Field strength	~ 470 mT/ ~ 20 MHz @ 1H
Bore diameter	35.1 mm
Gradient efficiency	25/25/25 mT/m/A
Gradient strength (DC-600)	100 mT/m with DC-600
Homogeneity (FOV)	< 30 ppm
Homogeneity (5mm)	< 10 ppm
Dimensions	46 cm x 37 cm x 25 cm
Weight	70 kg